

*We develop software that will help you manage the efficiency of your office operations.*

**RED LINE**  
S O F T W A R E



# Internet Access Monitor

## Quick Start Guide

## System requirements

- Windows 95/98/ME/NT/2000/XP/2003/Vista/2008;
- 128 RAM;
- 10000 Kb free disk space.

## Installation

To start installation process you simply need to run the iam\*\*\*\_full.exe file that you can download from our website.

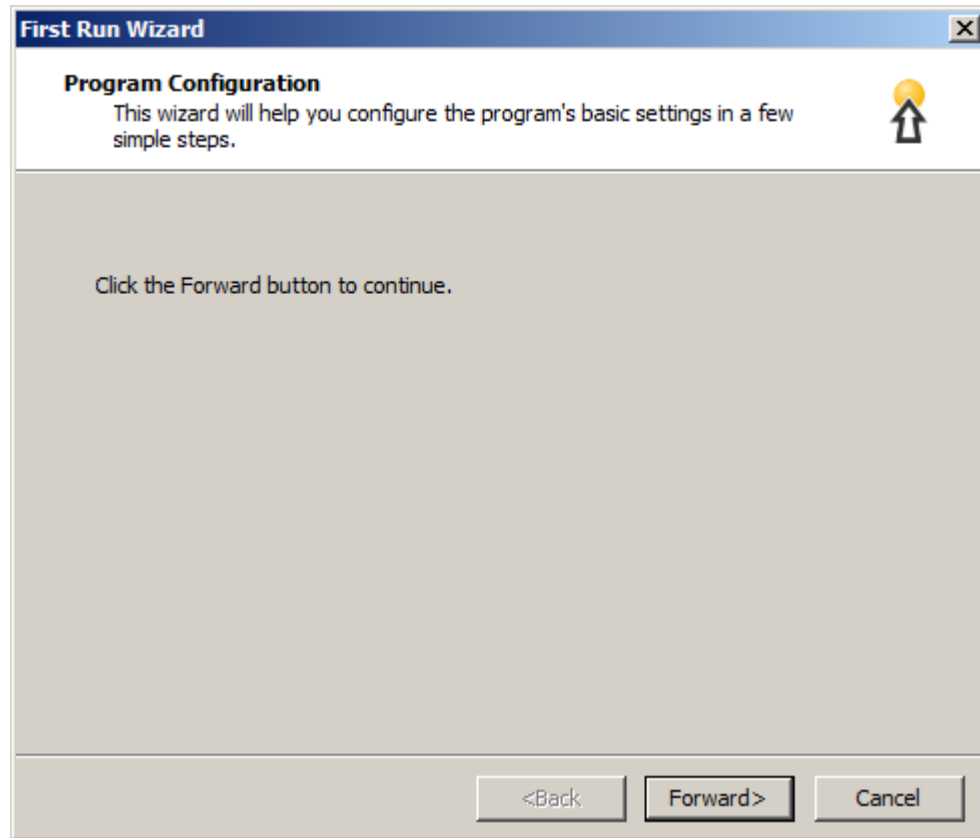
The \*\*\* symbols here stand for the name of proxy-server the program will be used for.



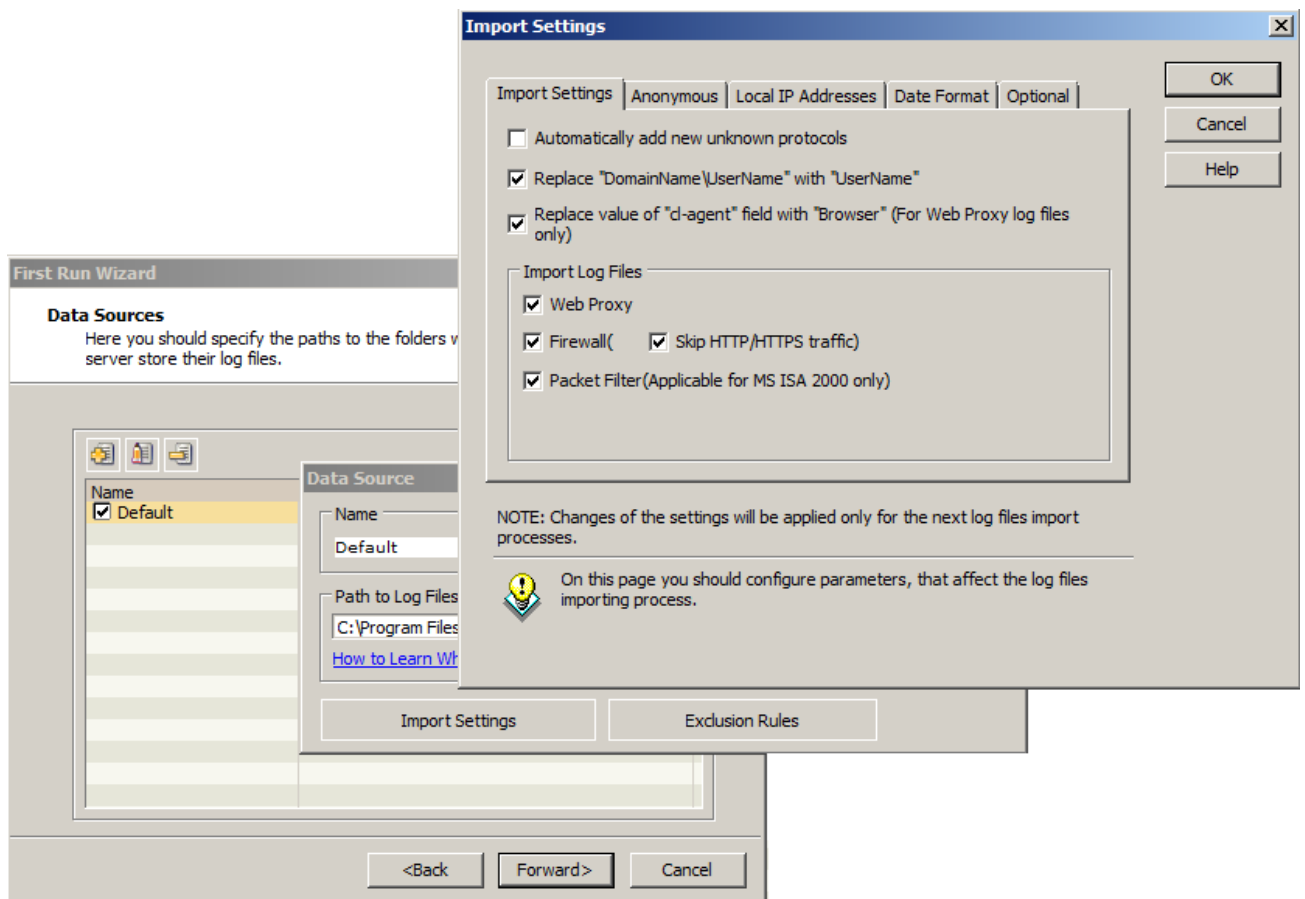
Installation process is quite simple and straightforward, and you should not experience any problems with it.

## Initial Configuration

When you launch the application for the first time the «First Run Wizard» will start automatically.



This wizard will help you specify basic configuration settings of the program and start import of log files.



As the first step the First Run Wizard prompts you to specify the settings of data source.

To manage data sources you can use buttons located above the list.

To edit existing data source you simply need to select it from the list and click the «Edit Data Source» button.

The resulting window allows you to specify the name of data source and path to proxy-server log files.

For more detailed information on location of log files from supported proxy-servers go to the following links:

- [Internet Access Monitor for EServ](#)
- [Internet Access Monitor for MS ISA Server/Forefront TMG](#)
- [Internet Access Monitor for MS Proxy Server](#)
- [Internet Access Monitor for Proxy+](#)
- [Internet Access Monitor for Squid](#)
- [Internet Access Monitor for WinGate](#)
- [Internet Access Monitor for WinProxy](#)
- [Internet Access Monitor for WinRoute](#)
- [Internet Access Monitor for Novell BorderManager](#)

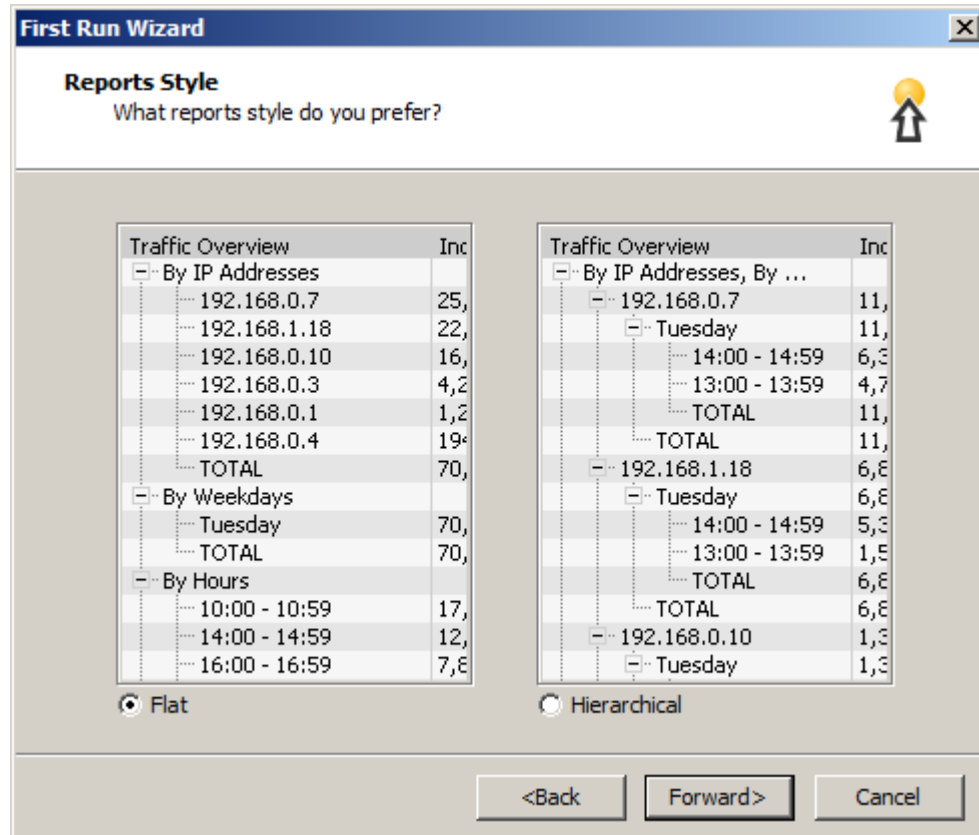
When you have specified the path to log files you should configure import settings.

Import settings are different for every proxy-server, but in most cases you should specify the list of local IP addresses used on your network first of all. This list is required for the program to be able to differentiate internal traffic from external one.

More detailed information on import settings for different proxy-servers is available [here](#).

Besides import settings here you can specify exclusion rules as well. These rules are used in order to determine, which information the program should exclude during import process.

You can use client IP addresses, remote hosts, and return codes from log files as exclusions.



In the next step you are prompted to select report style. Both report styles offered here are quite informative and convenient.

During the last step of the First Run Wizard you are offered to import log files.

When you are through with log file import the program offers you to check out documentation describing the process of report generation and work with the logs.

**Conclusion:**

This article describes the steps required for the initial configuration of the program. More detailed information on other configuration settings is available in the «Support» section on our website.